



SWISS TOOL
Selection Guide

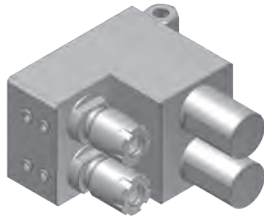
KOMA PRECISION

For over thirty-five years Koma Precision has been the foremost source for the finest the world has to offer in machine tool Productivity Innovation.

With over 30,000 rotary table installations, Koma is the largest distributor of Tsudakoma NC rotary tables and indexers in the world. With over 12,000 angle heads and live tools installed, Koma is the world's largest supplier for Alberti - the originator and the foremost innovator of productivity tooling.

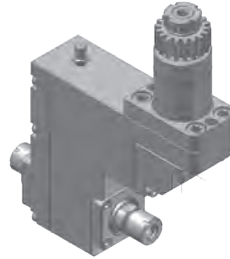


A20VII TOOLING FOR GANG TOOL POST



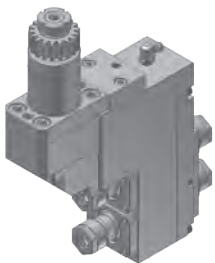
CTA162000
2 tool deep hole drill holder

TOOL SHANK Ø25.4mm
TOOL CLAMPING ER16M
DRILLING DEPTH(MAX) 95mm
MACHINE A20/A32



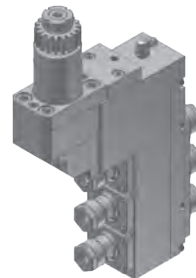
CTA511000
1 spindle drilling/milling unit

RATIO 1 : 1
RPM(MAX) 6000
TOOL CLAMPING ER11M
CITIZEN ITEM NO. BSE1007



CTA541200
2 spindle drilling/milling unit

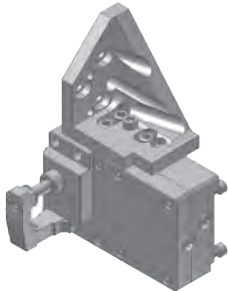
RATIO 1 : 1
RPM(MAX) 6000
TOOL CLAMPING ER11A
CITIZEN ITEM NO. BSE2007



CTA541300
3 spindle drilling/milling unit

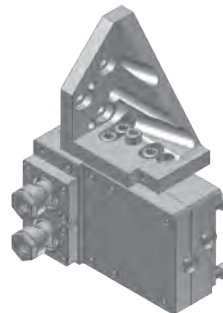
RATIO 1 : 1
RPM(MAX) 6000
TOOL CLAMPING:
Front Side: ER16
Back Side: ER11A
CITIZEN ITEM NO. BSE507

B12 TOOLING FOR GANG TOOL POST



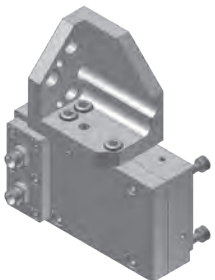
CTB801000
Gear hobbing unit

RATIO 2 : 1
RPM(MAX) 7000
CUTTER OD(MAX) Ø30.0mm
CUTTER SHANK Ø8.0mm



CTB812000
2 spindle cross drilling/milling unit

RATIO 2 : 1
RPM(MAX) 7000
TOOL CLAMPING ER11A



CTB882000
2 spindle cross drilling/milling unit

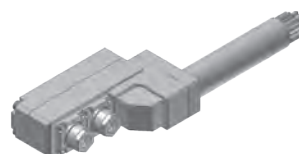
RATIO 2 : 1
RPM(MAX) 7000
TOOL CLAMPING ER8
CITIZEN ITEM NO. B12431B

C16/M12/M16 TOOLING FOR GANG TOOL POST



CTC161100
Cross drilling/milling unit

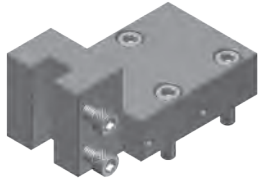
RATIO 1 : 1
RPM(MAX) 8000
TOOL CLAMPING ER11A
CITIZEN ITEM NO. GSC607



CTC441200
2 spindle drilling/milling unit

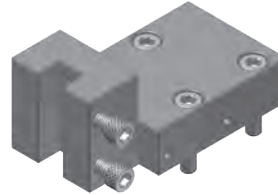
RATIO 1 : 1
RPM(MAX) 6000
TOOL CLAMPING ER11A

M16 TOOLING FOR TURRET TOOL POST



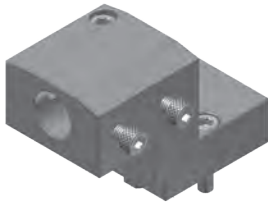
CTM1601101100
Turning bite holder

BITE HOLDER SHANK 10x10mm
CITIZEN ITEM NO. VTF110



CTM1602101100
Turning bite holder

BITE HOLDER SHANK
10x10mm
CITIZEN ITEM NO. VTF1310



CTM1603192100
1 tool boring bar holder

BORING BAR SHANK
Ø19.05mm
CITIZEN ITEM NO. VDF201



CTM1603192100-1
1 tool boring bar holder

BORING BAR SHANK
Ø19.05mm
CITIZEN ITEM NO. VDF501



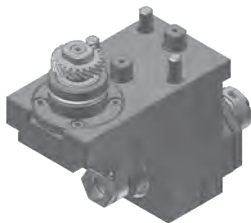
CTM1603192200
2 tool boring bar holder

BORING BAR SHANK
Ø19.05mm
CITIZEN ITEM NO. VDF40



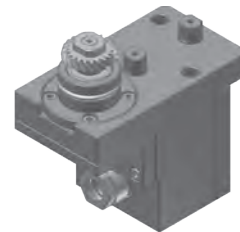
CTM1605111100-1
Cross drilling/milling unit

RATIO: 1/1
RPM: 6,000
TOOL CLAMPING: ER11A
MACHINE: M12/M16
CITIZEN ITEM NO. MSC107BT



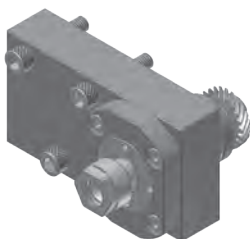
CTM1603112100
1 spindle drilling/milling unit

RATIO 1 : 1
RPM(MAX) 6000
TOOL CLAMPING ER11A
CITIZEN ITEM NO. MST306



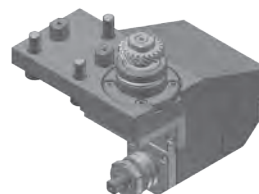
CTM1604112100
1 spindle drilling/milling unit

RATIO 1 : 1
RPM(MAX) 6000
TOOL CLAMPING ER11A
CITIZEN ITEM NO. MSE106



CTM1605111100
Cross drilling/milling unit

RATIO 1 : 1
RPM(MAX) 6000
TOOL CLAMPING ER11A
CITIZEN ITEM NO. MSC106



CTM1606122100
Slotting unit

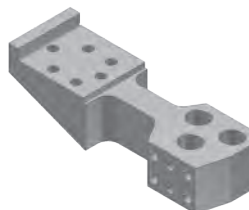
RATIO 1 : 1
RPM(MAX) 4000
SAW OD(MAX) Ø45mm
SA ARBOR SHANK Ø12.7mm
CITIZEN ITEM NO. MSS345

L16/L20 TOOLING FOR GANG TOOL POST



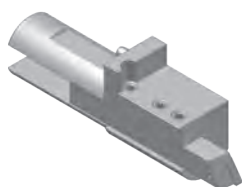
CTL101190 / CTL101191
1 tool sleeve holder

TOOL SHANK Ø32mm
DRILL SLEEVE SHANK
CTL101190 : Ø19.05mm
CTL101191 : Ø20.0mm
CITIZEN ITEM NO. GDF506



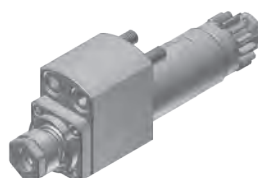
CTL103001
3 tool sleeve holder

DRILL SLEEVE SHANK Ø19.05mm
CITIZEN ITEM NO. GDF607



CTL2012100
Turning tool holder

TOOL SHANK Ø32mm
BITE HOLDER SHANK 12x12mm



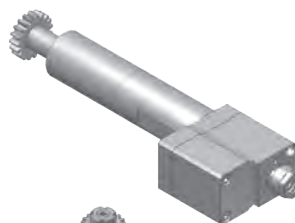
CTL111000
Cross drilling/milling unit

RATIO 1 : 1
RPM(MAX) 6000
TOOL CLAMPING ER11A
CITIZEN ITEM NO. GSC907



CTL161000
Cross drilling/milling unit

RATIO 1 : 1
RPM(MAX) 8000
TOOL CLAMPING ER16A
CITIZEN ITEM NO. GSC510



CTL161100
Cross drilling/milling unit

RATIO 1 : 3
RPM(MAX) 15000
TOOL CLAMPING ER11A
CITIZEN ITEM NO. GSC510-3X



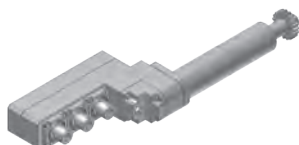
CTL411000
1 spindle drilling/milling unit

RATIO 1 : 1
RPM(MAX) 6000
TOOL CLAMPING ER11M
CITIZEN ITEM NO. GSE107



CTL461000
1 spindle drilling/milling unit

RATIO 1 : 1
RPM(MAX) 6000
TOOL CLAMPING ER16M



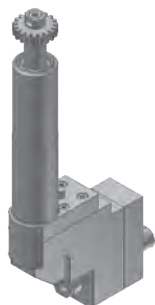
CTL441300
3 spindle drilling/milling unit

RATIO 1 : 1
RPM(MAX) 8000
TOOL CLAMPING ER11M



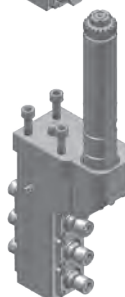
CTL491300
3 spindle drilling/milling unit

RATIO 1 : 1
RPM(MAX) 6000
TOOL CLAMPING ER11A
ANGLE ADJUSTMENT ±15°
CITIZEN ITEM NO. GSA107



CTL511000
1 spindle drilling/milling unit

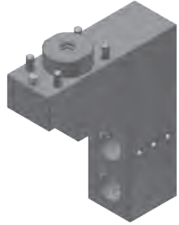
RATIO 1 : 1
RPM(MAX) 6000
TOOL CLAMPING
Front side : ER11A
Back side : ER11M



CTL513000-1
3 spindle drilling/milling unit

RATIO 1 : 1
RPM(MAX) 5000
TOOL CLAMPING ER11M
CITIZEN ITEM NO. GSE1307

L20E/L20X TOOLING FOR GANG TOOL POST



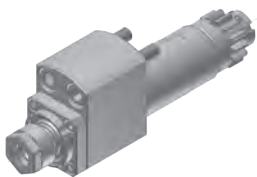
CTL140200-1
2 tool sleeve holder

TOOL SHANK Ø31mm
DRILL SLEEVE SHANK Ø19.05mm
CITIZEN ITEM NO. GDF508



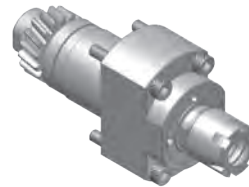
CTL140300-3
3 tool sleeve holder

TOOL SHANK Ø25mm
DRILL SLEEVE SHANK Ø19.05mm
CITIZEN ITEM NO. GDF507



CTL111000
Cross drilling/milling unit

RATIO 1 : 1
RPM(MAX) 6000
TOOL CLAMPING ER11A
CITIZEN ITEM NO. GSC907



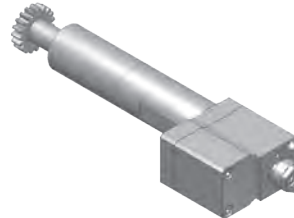
CTL861000
Cross drilling/milling unit

RATIO 1 : 1
RPM(MAX) 8000
TOOL CLAMPING ER16M
CITIZEN ITEM NO. GSC1210



CTL161000
Cross drilling/milling unit

RATIO 1 : 1
RPM(MAX) 8000
TOOL CLAMPING ER16A
CITIZEN ITEM NO. GSC510



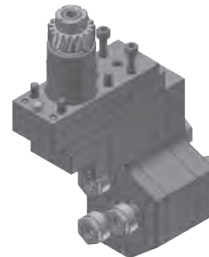
CTL161100
Cross drilling/milling unit

RATIO 1 : 3
RPM(MAX) 15000
TOOL CLAMPING ER11A
CITIZEN ITEM NO. GSC510-3X



CTL541200
2 spindle drilling/milling unit

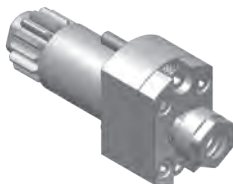
RATIO 1 : 1
RPM(MAX) 6000
TOOL CLAMPING ER11A
CITIZEN ITEM NO. GSE3107



CTL541300-2
3 spindle drilling/milling unit

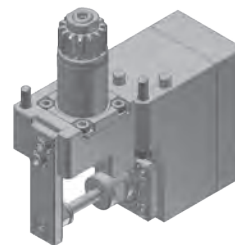
RATIO 1 : 1
RPM(MAX) 6000
TOOL CLAMPING ER11A
CITIZEN ITEM NO. GSE3207

L20E/L20X TOOLING FOR BACK TOOL POST



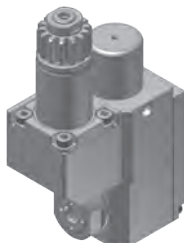
CTL711000
Drilling/milling unit

RATIO 1 : 1
RPM(MAX) 8000
TOOL CLAMPING ER11A
CITIZEN ITEM NO. GSE3507



CTL731000
Slotting unit

RATIO 1 : 1
RPM(MAX) 4000
SAW OD(MAX) Ø35mm
SAW ARBOR SHANK Ø6.0mm
CITIZEN ITEM NO. GSS1330



CTL761100E
Cross drilling/milling unit

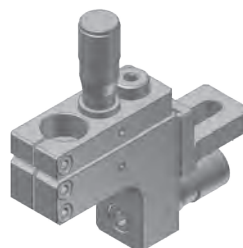
RATIO 1 : 1
RPM(MAX) 6000
TOOL CLAMPING ER11
MACHINE L20E
CITIZEN ITEM NO. GSS1330

L20/L32 AIR TOOL AIR TOOL HOLDER



CTL401000
Air tool holder

TOOL SHANK Ø32.0mm
AIR TOOL SHANK
Ø19.05/20.0mm



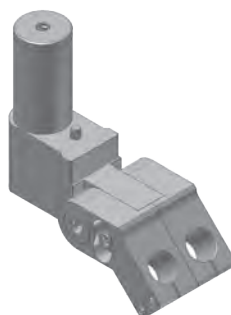
CTL601000
Air tool holder

TOOL SHANK
Ø19.05/20.0/25.4mm
AIR TOOL SHANK
Ø19.05/20.0mm



CTL4014500
Air tool holder

TOOL SHANK Ø32.0mm
AIR TOOL SHANK Ø19.05mm
TILT ANGLE 45°
MACHINE L32



CTL4101200
Air tool holder

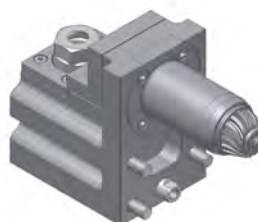
TOOL SHANK Ø32.0mm
AIR TOOL SHANK Ø12.0mm
TILT ANGLE 45°
ANGLE ADJUSTMENT ±20°

M32



CTM3204161100-1
Cross drilling/milling unit

RATIO: 2 : 1
RPM: 10,000
TOOL CLAMPING: ER16A
CITIZEN ITEM NO.: KSC110(2x)



CTM3204162100
Axial for front working

RATIO: 1 : 1
RPM: 6,000
TOOL CLAMPING: ER16A
CITIZEN ITEM NO.: KSE110

PART CATCHER



CTA900000
PART CATCHER

MACHINE / A32



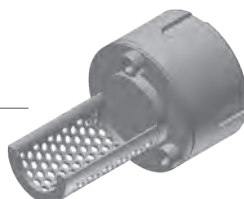
CTA900000-1
PART CATCHER

MACHINE / A20



CTL900000
PART CATCHER

MACHINE / L20



CTC900000
PART CATCHER

MACHINE / C16



CTE900000
PART CATCHER

MACHINE / L20E



Tel: 1.800.249.5662
Fax: 860.623.4132

info@komaprecision.com
www.komaprecision.com

20 Thompson Road
East Windsor, CT 06088